



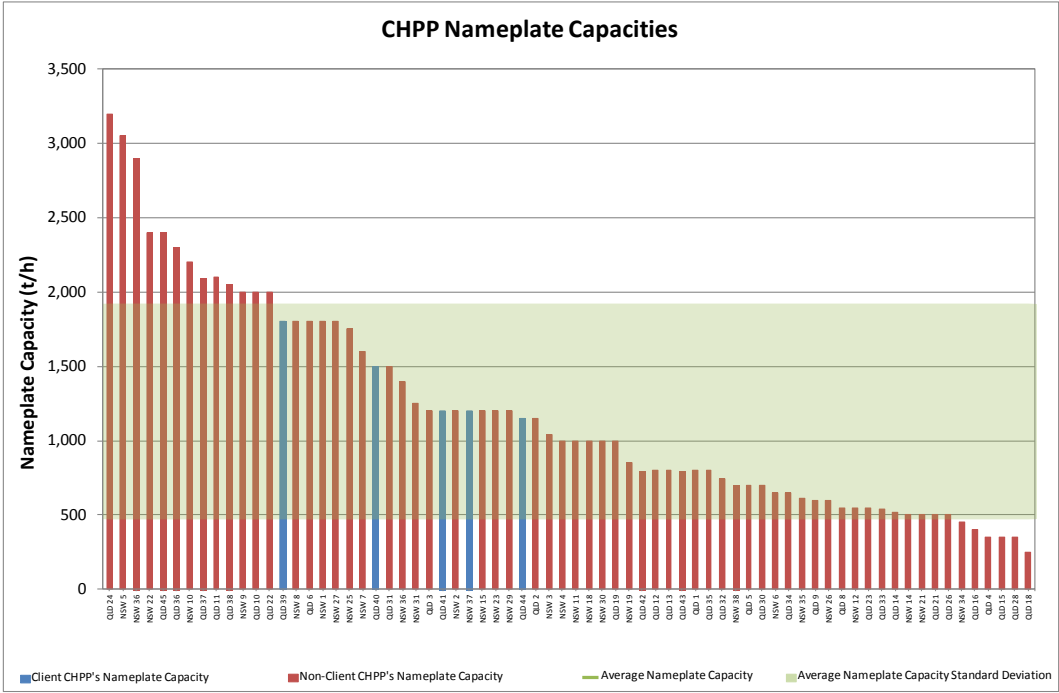
CHPP Benchmarking Capability

CHPP Benchmarking



A&B Mylec Pty Ltd undertake external CHPP benchmarking to compare our client's CHPP performance against Australian Industry best practice.

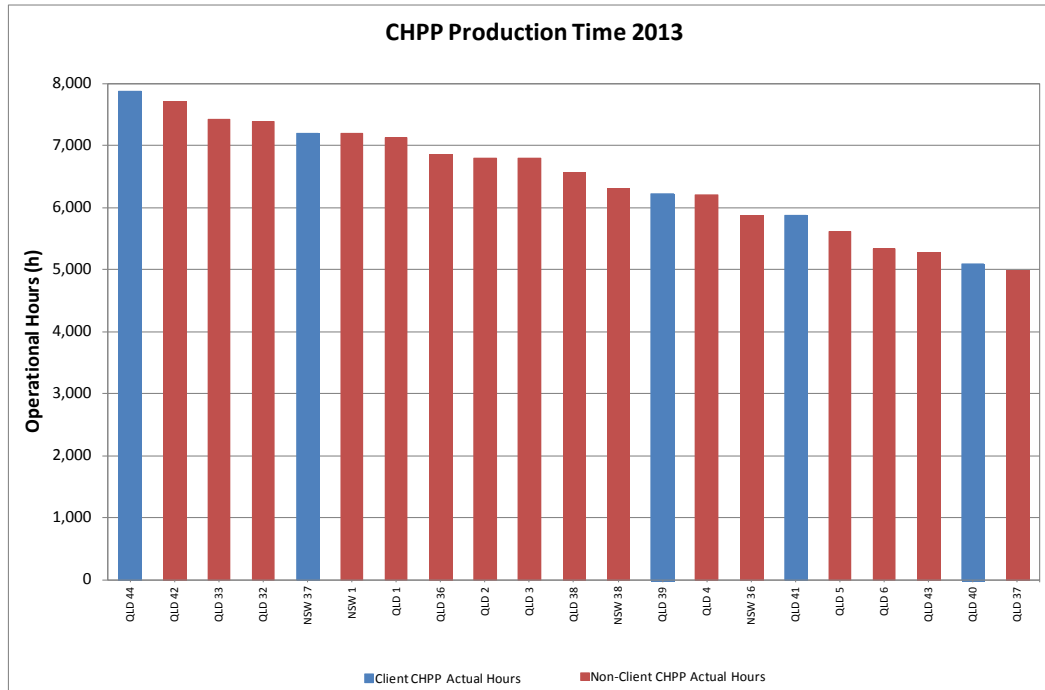
CHPP Nameplate Capacities



Benchmarking feedrate against major equipment list identifies bottlenecks at best practice metallurgical efficiency.

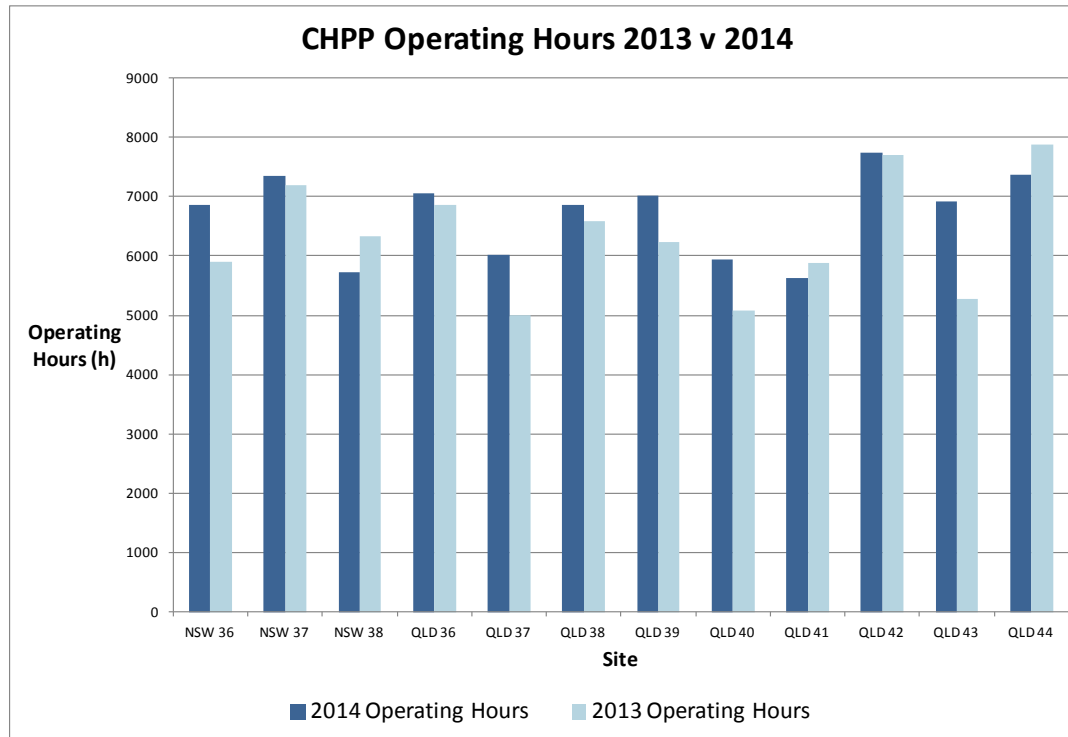


CHPP Production Time



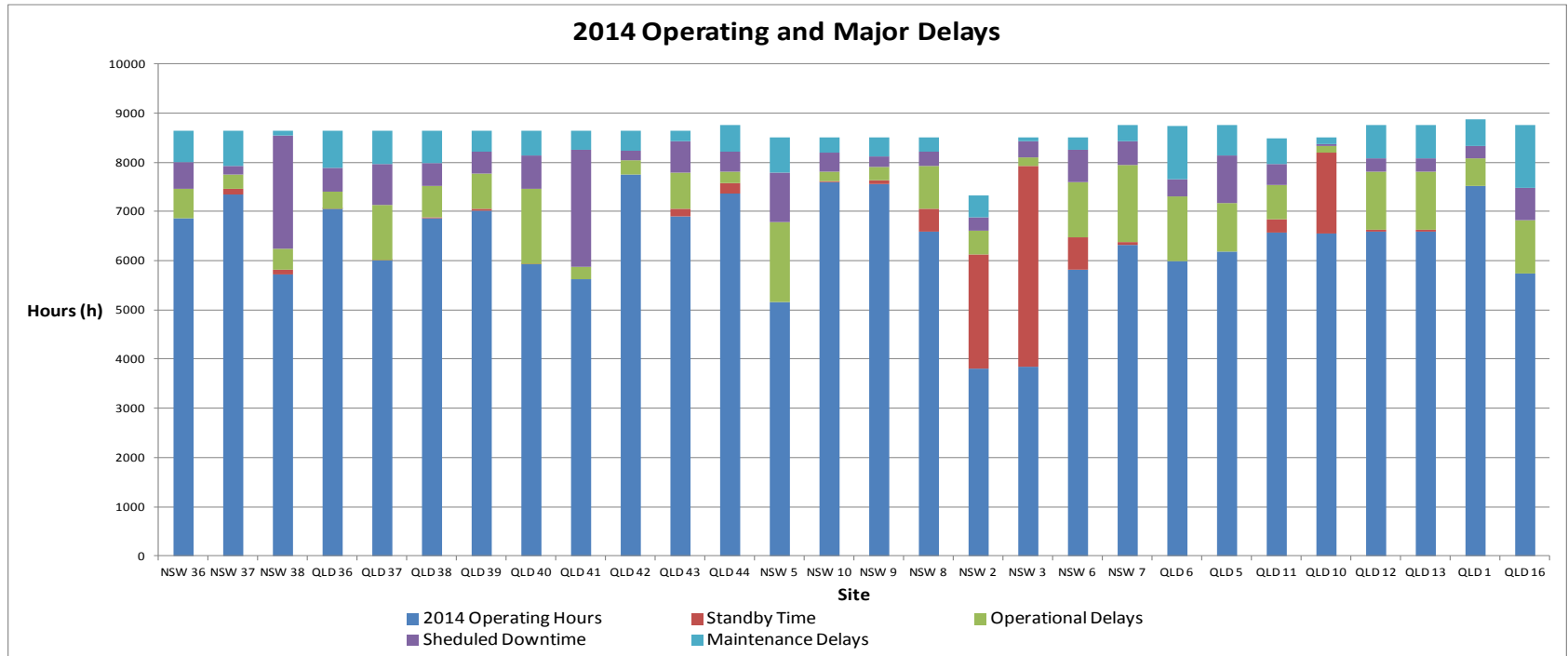
In 2013 seven CHPP operations needed to exceed 7,000 operational hours to achieve their production targets.

Annual Operating Hours Comparisons



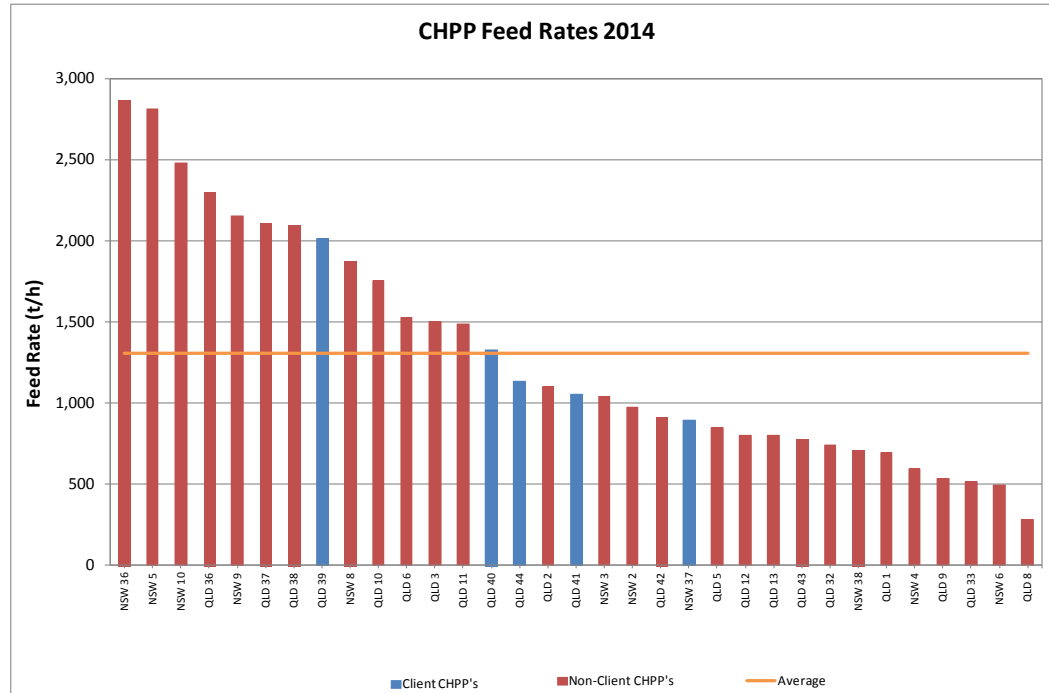
Q1 2014 (annualised) data describes the industry focus at that time

Operating and Major Delays Comparison



High production sites usually have a corresponding reduction in maintenance and operational delays and have a balance between scheduled downtime and unplanned delays.

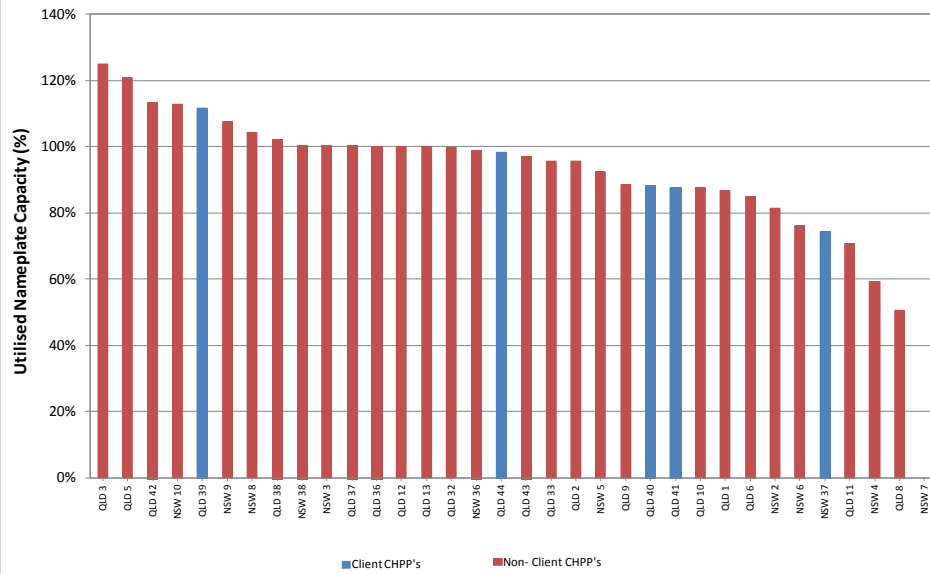
2014 CHPP Feed Rates



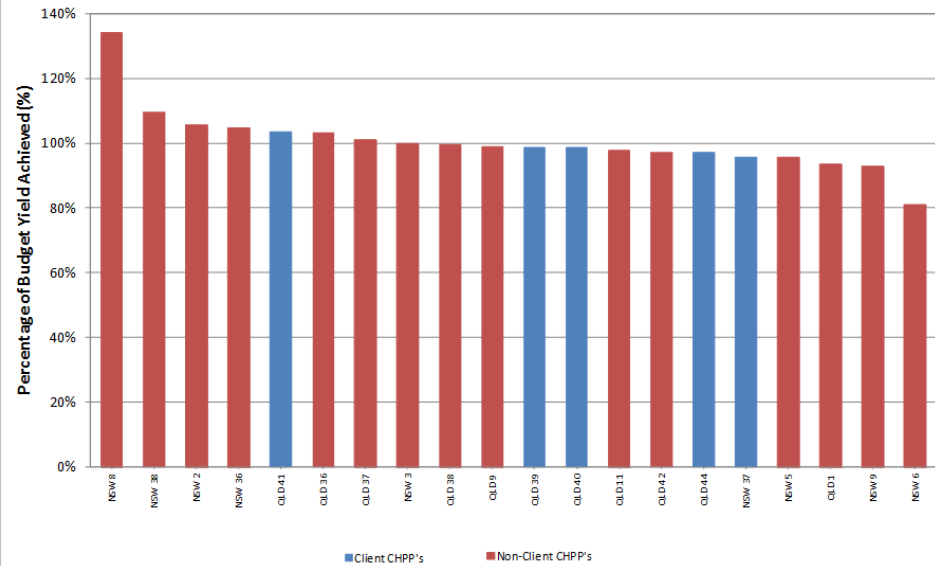
2014 feed rates of 1,310 tph were higher than 2013 (195 tph)

CHPP Utilised Capacity vs. Budget Yield

CHPP Utilised Nameplate Capacity 2014



CHPP Percentage of Budget Yield Achieved 2014



Sites exceeding nameplate capacity are inevitably achieving below budget yields.

LINKS AND CONTACTS

For more information go to the following web pages...

www.abmylec.com.au

Contact Details:

Head Office

+61 7 4927 9188

mylec@abmylec.com.au

